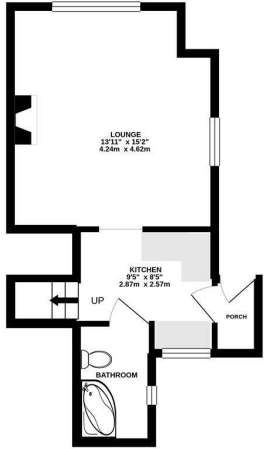




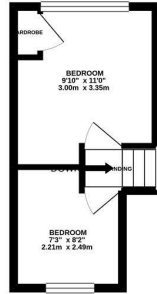
Keith
Ashton

Wellesley Road,
Brentwood

GROUND FLOOR
338 sq.ft. (31.4 sq.m.) approx.



1ST FLOOR
171 sq.ft. (15.8 sq.m.) approx.



TOTAL FLOOR AREA: 509 sq.ft. (47.2 sq.m.) approx.

While every attempt has been made to ensure the accuracy of the figures contained here, measurements of actual areas, volumes and other data have not been independently verified by any other person or organisation. The accuracy of any information contained here is not guaranteed and is for general informational purposes only. The accuracy of any information contained here is not guaranteed and is for general informational purposes only. We do not accept liability for any loss or damage caused by reliance on the information contained here. Made with Blueprints Cloud

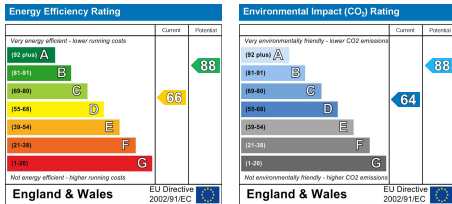


1 Dukes Place Wellesley Road, Brentwood, CM14 4XD

A well presented two bedroom character cottage positioned very close to Brentwood's bustling High Street with its array of shops, salons and restaurants plus Brentwoods mainline train station with the imminent arrival of Crossrail.

It has an attractive fitted kitchen, a lounge with dual aspect windows, a feature fireplace, a modern bathroom with a corner bath and two good-sized bedrooms. There is a courtyard garden to the rear and a mature front garden. The cottage also comes with the added benefit of its own porch and we would strongly recommend an internal viewing to appreciate the opportunity on offer. Residents permit parking is available, along with high-speed broadband and it is being sold with NO ONWARD CHAIN.

Offers In Excess Of £300,000



SERVICES:

Local Authority: Brentwood
Council tax band: C
Post code: CM14 4XD

VIEWING:

Strictly by prior arrangement with Keith Ashton Estate Agents

OPENING HOURS:

Monday to Friday: 8.45AM - 6.30PM | Saturdays: 9AM - 5.30PM | Sundays: 10AM - 2PM

MORTGAGE INFORMATION:

We offer the additional facility of an in-house Independent Financial Adviser who will access all mortgage lenders with the purpose of providing you with the benefit of choice. For quotations or comparables please call 01277 260858 or visit our interactive website at www.mortgagebusiness.net



We the Agent have not tested any apparatus, fittings or services for this property. The plot size is intended merely as a guide and has not been officially measured or verified by the Agent. Photographs are for illustration only and may depict items which are not for sale or included in the sale of the property. As part of the service we offer we may recommend ancillary services to you which we believe may help you with your property transaction. We wish to make you aware, that should you decide to use these services we will receive a referral fee. For full and detailed information please visit 'terms and conditions' on our website www.keithashton.co.uk

Brentwood
Tel. 01277 260858

Village Office
Tel. 01277 375757

Lettings Office
Tel. 01277 202200

Explore more @ www.keithashton.co.uk

